



MILLARD TOWERS LTD.

INDUSTRIAL WINDSOCK



Millard Towers offers a complete line of windsock assemblies that can be used for a variety of industrial applications where knowing the wind direction is critical for operations and safety. Typical uses include chemical plants, oil & gas production, agriculture, railyards, harbours, and arenas. Like all Millard products, windsocks are made from high-grade materials and designed to provide reliable performance in the most extreme environmental conditions. All standard designs are kept in stock ensuring on-time delivery.

Custom engineering and fabrication services provide solutions for even the most stringent of applications.

The Industrial Windsock product line is not intended for use at Airports and Heliports as they do not meet their unique specifications. Millard manufactures a separate Aviation-specific windsock product line that is engineered and certified to meet ICAO, FAA, and Transport Canada standards.



KEEPING THE WORLD ON COURSE SINCE 1951

VERSION 1.1
D-MDW-4000-11-EN

SPECIFICATIONS

SWIVEL



- 304 Stainless Steel materials are highly resistant to corrosion
- Single-welded construction fabricated per CSA W59
- Nylon bushings do not require lubrication
- Standard 3/4" NPT mount (no Pole)

PART NO	DIAMETER		MOUNT		
	CM	IN	THREAD	MM	IN
WIU-1300-US00	33	13	3/4" NPT	27 OD	1.05 OD
WIU-1800-US00	45	18	3/4" NPT	27 OD	1.05 OD
WIU-2400-US00	60	24	3/4" NPT	27 OD	1.05 OD

FABRIC

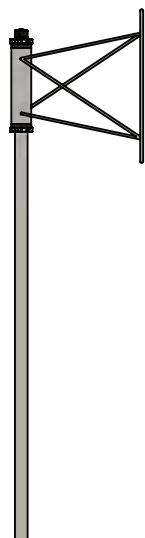


- Uses Bright Oxford Nylon 200 Denier fabric for visibility, durability and optimal fill
- Minimum breaking strength of 667N (150lbs) per FED-STD-191A Method 5102 testing
- Colourfastness AATC Gray Scale Rating of 4 or higher at 40 hours of UV testing (FED-STD-191A equivalent)
- Large diameter reinforced with a double layer of material for added strength
- 1/2" brass grommets and UV-rated cable ties provide simple and secure attachment to swivel

PART NO	COLOUR	LARGE DIAMETER		SMALL DIAMETER		LENGTH	
		CM	IN	CM	IN	CM	IN
CWFF-1305-OR00	ORANGE	33	13	9	3.5	150	60
CWFF-1305-RW01	RED-WHITE	33	13	9	3.5	150	60
CWFF-1806-OR00	ORANGE	45	18	9	3.5	180	72
CWFF-1806-RW01	RED-WHITE	45	18	9	3.5	180	72
CWFF-1808-OR00	ORANGE	45	18	15	6	240	96
CWFF-1808-RD00	RED	45	18	15	6	240	96
CWFF-1808-RW00	RED-WHITE	45	18	15	6	240	96
CWFF-2408-OR00	ORANGE	60	24	15	6	240	96
CWFF-2408-RW00	RED-WHITE	60	24	15	6	240	96
CWFF-3612-OR00*	ORANGE	90	36	17	7	360	144

* Excess stock. Millard does not manufacture a 90cm (36") diameter Industrial Swivel

POLE



- Integrated Pole with Swivel
- 304 Stainless Steel Pole is highly resistant to corrosion
- Easily installed to walls, poles and railings using optional standardized mounts

PART NO	DIAMETER		HEIGHT		MOUNT	
	CM	IN	CM	IN	MM	IN
WIU-1300-US01	33	13	150	60	27 OD	1.05 OD
WIU-1300-US02	33	13	225	90	27 OD	1.05 OD
WIU-1300-US03	33	13	300	120	27 OD	1.05 OD
WIU-1800-US01	45	18	150	60	27 OD	1.05 OD
WIU-1800-US02	45	18	225	90	27 OD	1.05 OD
WIU-1800-US03	45	18	300	120	27 OD	1.05 OD
WIU-2400-US01	60	24	150	60	27 OD	1.05 OD
WIU-2400-US02	60	24	225	90	27 OD	1.05 OD
WIU-2400-US03	60	24	300	120	27 OD	1.05 OD

POLE MOUNTING BRACKETS

PART NO: AMB-0000-0168



- Aluminum Bracket
- Stainless Steel Hardware
- Fits up to 60mm OD (2.375")