

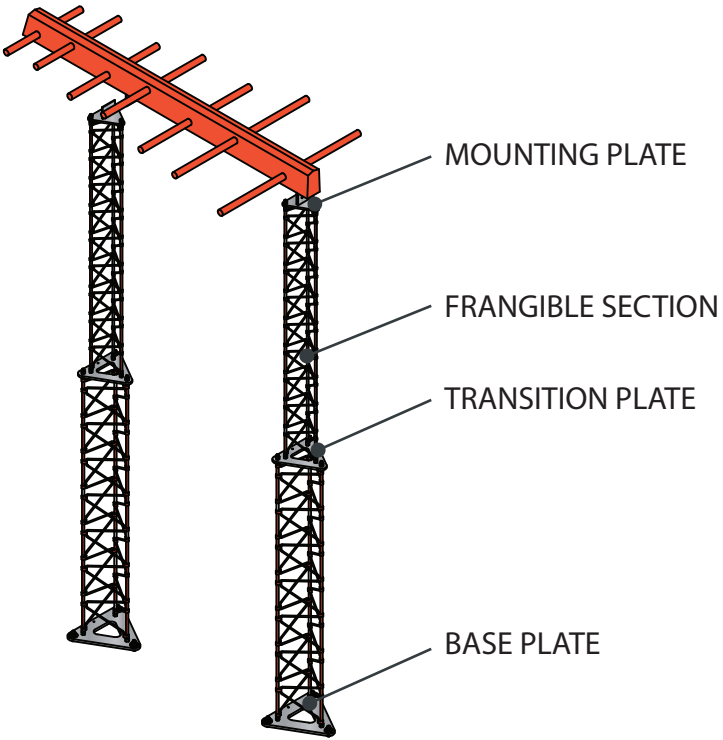


Localizer Antennas are part of the Instrument Landing Systems (ILS) and are critical to safely landing aircraft. Due to its critical nature, its support structure is required to be rigid. This is typically achieved using metal pipe and a significant amount of angle or tube bracing. Although these structures meet deflection requirements, they may not meet frangibility requirements and can be very detrimental to aircraft if accidentally impacted. As a safe alternative, Millard offers an Aluminum mast that provides rigidity, yet is yielding if accidentally impacted. The design utilizes Millard's unique lattice structure that is both strong and frangible. Masts are fully compliant with ICAO Doc 9157: Part 6, Frangibility.

In addition to masts, Millard also provide a complete line of accessories and mounts to ensure simple and safe installation and maintenance.



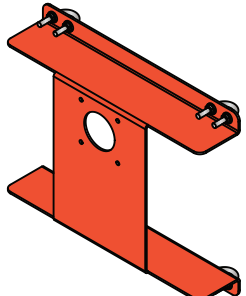
DESIGN



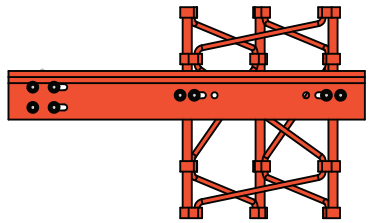
NOMINAL HEIGHT (m)	DESIGN	SECTIONS	BASE PLATE LAYOUT
0.75 to 3.00	Double Mast	TOP: 9T17	330mm Triangle
3.75 to 5.25	Double Mast	TOP: 9T17 BASE: 13T27	457mm Triangle
6.00 to 7.50	Double Mast	TOP: 9T17 MID: 13T27 BASE: 18T55	457mm Triangle
8.25 to 10.50	Double Mast	TOP: 9T17 MID: 13T27 BASE: 18T55 (qty.2)	610mm Triangle

- OPERATIONAL: 120km/h
SURVIVAL: 185km/h
- ALUMINUM: Section, Plates, Bracing, Mounts
ECO GUARD STEEL: Hardware
- OPERATIONAL DEFLECTION: 0.5 degrees
- POWDER COATING: Solid Orange

ACCESSORIES



CABLE TRAY BRACKETS

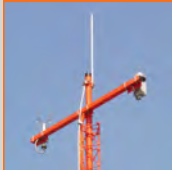


OBSTRUCTION LIGHT MOUNT

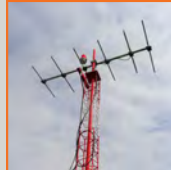
OTHER AVIATION APPLICATIONS:



APPROACH LIGHTS



METEOROLOGY



ANTENNAS



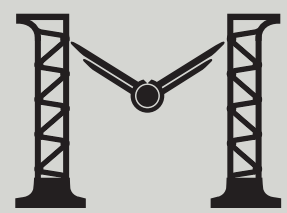
WINDSOCKS



ILS



NON-FRANGIBLE



MILLARD TOWERS LTD.

Tel: +1 (905) 377-9808
 Email: Sales@MillardTowers.com
 Web: www.MillardTowers.com