



MILLARD TOWERS LTD.

900M ALUMINUM TOWER



Millard Towers offers a complete line of Aluminum towers that are durable and easy to use. Millard's M Series is engineered to support equipment for a variety of applications - Meteorology, Communication, Security, Lighting, etc. Towers are made from high-grade Aluminum Alloy and suitable for the most extreme environmental conditions with high wind, ice, UV and saltwater exposure. A modular design, lowering features, and customizable mounts make it easy to ship, install, and service.



KEEPING THE WORLD ON COURSE SINCE 1951

D_M900M_EN_1.0
2020-03

CONSTRUCTION.

SECTIONS, PLATES, ACCESSORIES (ASTM): 6000 Series Aluminum
 HARDWARE (ASTM): Stainless Steel 316
 POWDER COATING (AAMA): Optional aviation banding
 ANODIZING (ASTM): Optional clear coat
 RECYCLABLE (LEED): Made from 75% recycled content

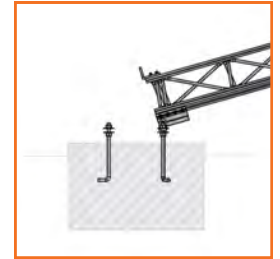
PERFORMANCE.

ENGINEERING: CSA S37 and TIA 222
 WIND LOAD w/ NO ICE: 229kph (142mph) Gust*
 WIND LOAD w/ 12mm ICE: 196kph (122mph) Gust*
 WIND LOAD w/ 25mm ICE: 175kph (109mph) Gust*
 * Assumes 0.2m² (2.15ft²) EPA at top of tower



HINGED BASE

Each tower is equipped with a hinged base. This standard feature allows the tower to be assembled horizontally so equipment can be installed from the ground. Once assembled, the tower can be raised into position by hand or mechanical means. The hinged base is to primarily aid in installation, but it can be used for maintenance with the assistance of 3-4 technicians.

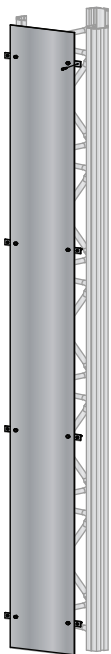


TILT-OVER

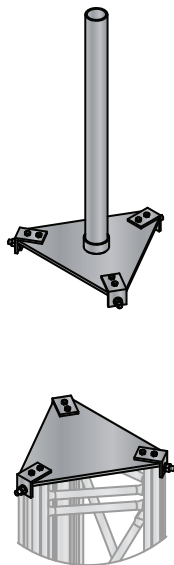
As an optional add-on, Millard can supply a Tilt Over design. The elevated hinge allows the tower to be mechanically lowered and raised for quick, simple, and safe maintenance. Positioned at a height of 3.00m, the hinge operates using a robust 'tilting arm' and a wormgear winch. The feature is also beneficial during installation whereby leaving the hinge open, the tower can be jack-knifed into place by 2-3 technicians in the ground. The winch can then be used to raise the rest of the tower to its final upright position.



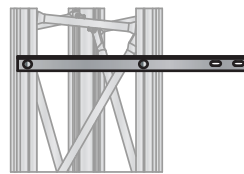
CLIMB GUARDS



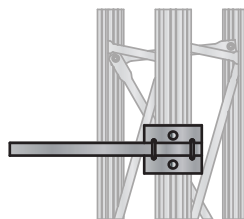
TOP MOUNTS



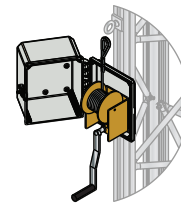
ANGLE MOUNTS



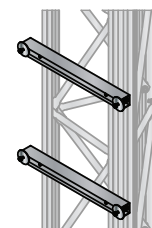
PIPE MOUNTS



WINCH and ENCLOSURE



JUNCTION BOX MOUNT



LIGHTNING PROTECTION

