



MILLARD TOWERS LTD.

TILTABLE STEEL POLE



Built to AASHTO standards, the Tiltable Steel Pole is fabricated from structural steel and hot-dipped galvanized for increased durability. In addition, the octagonal shape provides minimal resistance to the wind while rigidly supporting airfield equipment. The pole can be left bare or can be painted orange and white per Transport Canada, ICAO, and FAA obstruction marking requirements.

It's most noticeable feature is the tiltable mechanism. The pole can be lowered and raised using a wormgear winch allowing equipment maintenance to be performed by a single technician. A hand hole at the base also simplifies servicing by granting easy access to electrical connections.

The design can be used for Airport Beacons, Floodlighting, and other airfield equipment where frangibility is not a concern.



KEEPING THE WORLD ON COURSE SINCE 1951

D_TSPLE_EN_1.0
2020-01

STANDARD: Designs based on AASHTO Standard Specifications for Structural Supports for Highway Signs, Luminaires, and Traffic Signals.

LOADS: Wind speeds in the table denote the maximum wind gust speed at the project site. The gust factor is already included.

MATERIALS: Hot-dipped galvanized structural steel, octagonal shape.

FINISH: Bare or painted orange and white (x7 bands) per obstruction marking requirements.

SERVICING: Mechanically lowerable for safe and simple servicing using a wormgear winch.

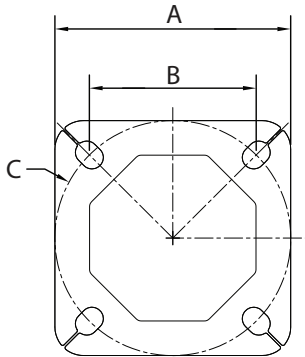
HAND HOLE: Located at a height of 255mm and equipped with a 100mm x 175mm hand hole cover.

EXTRAS: All poles are supplied with a wormgear winch for lowering, nut covers, and shims.

ANCHOR BOLTS: Hot-dipped galvanized steel hardware can be provided upon request.

PART NO.	HEIGHT	WEIGHT	ANCHOR BOLT SIZE	BASE PLATE TYPE	MAX WEIGHT AT TOP	MAXIMUM EPA (m ²)			
						128km/h	144km/h	160km/h	176km/h
T-NFB-0600-CB01-GA	6.00m	112kg	1" x 92cm	1	137kg	2.79	2.14	1.72	1.39
T-NFB-0750-CB01-GA	7.50m	143kg	1" x 92cm	1	118kg	2.22	1.72	1.35	1.02
T-NFB-0900-CB01-GA	9.00m	191kg	1" x 92cm	2	118kg	2.14	1.67	1.35	0.98
T-NFB-1050-CB01-GA	10.50m	268kg	1" x 92cm	3	118kg	2.32	1.77	1.35	1.02
T-NFB-1200-CB01-GA	12.00m	352kg	1" x 92cm	4	118kg	2.28	1.72	1.35	0.98
T-NFB-1500-CB01-GA	15.00m	481kg	1" x 92cm	5	107kg	1.90	1.35	1.02	0.60

BASE PLATE DETAILS



BASE PLATE TYPE	A (mm)	B (mm)	C (mm)
1	292	193	273
2	292	202	286
3	330	233	330
4	356	251	356
5	406	287	406

TYPICAL BEACON MOUNT

Custom available upon request

