

WINDSOCK POLE



Millard offers a complete line of Aluminum Poles specifically designed for mounting and supporting Windsocks. Designs come in standard heights according to ICAO, FAA, and Transport Canada standards. All Poles are fabricated using marine-grade Aluminum Alloy ensuring a lightweight, yet robust design requiring only nominal maintenance. A variety of servicing features and accessories allow Windsocks to be installed and maintained simply and safely.

In addition to standard offerings, Millard is able to engineer and fabricate custom designs in-house and to customer specifications.



CONSTRUCTION.

SECTIONS, PLATES, ACCESSORIES (ASTM): 6000 Series Aluminum
 HARDWARE (ASTM): ECO GUARD Grade 5 Steel
 POWDER COATING (AAMA): Aviation Orange, banded optional
 RECYCLABLE (LEED): Made from 75% recycled Aluminum
 WARRANTY: 10 Years

PERFORMANCE.

WIND LOAD w/ NO ICE: 250km/h Gust*
 WIND LOAD w/ 12mm ICE: 235km/h Gust*
 WIND LOAD w/ 25mm ICE: 220km/h Gust*
 TYPICAL LIFSPAN: 25 Years
 * Assumes 90cm Millard Lit Windsack Assembly

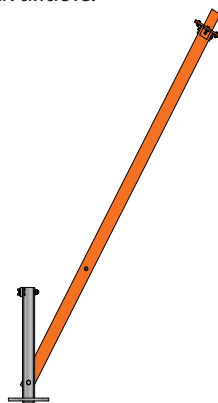
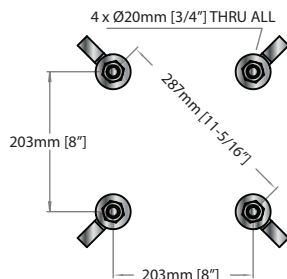
STANDARD DESIGNS

Custom heights, design loads, mounts, and finishes are available.

PART NO	HEIGHT	SERVICING	MOUNT	FINISH
225W-APTb	2.25m	Tilt Base	2" NPT (60mm OD)	Orange
450W-APTb	4.50m	Tilt Base	2" NPT (60mm OD)	Orange
450W-APCH	4.50m	Center Hinge	2" NPT (60mm OD)	Orange
225W-APWM	2.25m	Wall Mount	2" NPT (60mm OD)	Orange
450W-APWM	4.50m	Wall Mount	2" NPT (60mm OD)	Orange

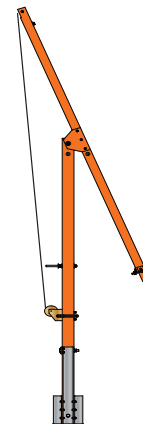
ANCHOR BOLT LAYOUT

Tilt Base and Center Hinge



TILT BASE

Tilt Base designs are assembled and maintained along the ground and raised manually by hand. Operation should be performed by 2-3 people.



CENTER HINGE

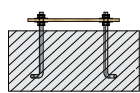
Center Hinge designs utilize a two-way strap winch to mechanically raise and lower the tower. Maintenance can be safely performed by one person. It also comes with a Tilt Base for easy installation.



WALL MOUNT

Wall Mount designs utilize to brackets to secure itself to a wall, pole, or other structure. It pivots on the bottom bracket so it can be lowered manually. It can also be outfitted with a wormgear winch for mechanical lowering.

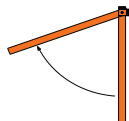
FOUNDATION KIT



- CNC cut wood template
- HD galvanized anchors
- Tilt Base and Center Hinge

POLE: ATF-0850-0000

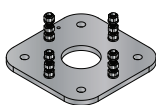
TILT STAND



- Supports pole during maintenance
- Mounts to pole and pivots
- Powder coated orange

POLE: TILT-STND-AP03

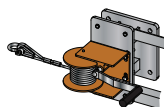
TRANSITION PLATE



- Suit existing anchor bolts
- Aluminum plate
- HD galvanized hardware

252mm (10"): ZPRO-20-209

WALL MOUNT WINCH



- Wormgear winch
- Aluminum mount
- Stainless steel aircraft cable

2.25m / 4.50m: RMW6

FUSE BOLTS



- Frangible shear anchors
- HD galvanized
- Set of four

3/4" QTY.4: CFFS-0700-0001

CABINET MOUNT



- Aluminum strut (x2 per set)
- Powder coated orange
- Included if Windsack also purchased

BASE MOUNT: AMT-1616-1801