



Millard's frangible towers can be used to support Distance Measuring Equipment (DME). Similar to other ILS equipment, these applications have stringent deflection requirements. Towers are built in 75cm increments with a maximum deflection of half a degree under operational conditions. The towers have been thoroughly analyzed and tested to meet these requirements with over 70 years of experience to support this claim.

Towers are made from high-grade Aluminum Alloy and suitable for the most extreme environmental conditions with high wind, ice, UV, and saltwater exposure. A modular design, lowering features, and customizable mounts make it easy to ship, install, and service.



CONSTRUCTION.

SECTIONS, PLATES, ACCESSORIES (ASTM): 6000 Series Aluminum
 HARDWARE (ASTM): Grade 5 EcoGuard Steel
 ANCHOR BOLTS (ASTM): Hot-dipped Galvanized Steel
 POWDER COATING (AAMA): Orange-White Banding
 RECYCLABLE (LEED): Made from 75% recycled content

PERFORMANCE.

FRANGIBILITY: ICAO Doc 9157 & FAA AC 150 / 5345-45
 ENGINEERING: CSA S37
 OPERATIONAL WIND LOAD: 750Pa (120km/h) mean hourly
 SURVIVAL WIND LOAD: 1,500Pa (170km/h) 3-second gust
 OPERATIONAL DEFLECTION: <0.5 degrees

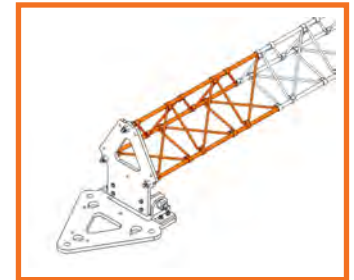
STANDARD TOWERS.

PART NO*	HEIGHT (m)	BASE
TFID-0150-xR00-B1	1.50	9T
TFID-0225-xR00-B1	2.25	9T
TFID-0300-xR00-B1	3.00	9T
TFID-0375-xR00-B1	3.75	13T
TFID-0450-xR00-B1	4.50	13T
TFID-0525-xR00-B1	5.25	13T
TFID-0600-xR00-B1	6.00	13T

* where x = "F" for Fixed Base or "T" for Tilt Base

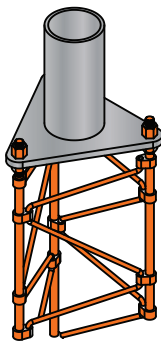
SERVICING.

Fixed Base



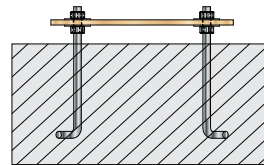
Tilt Base

For its DME towers, Millard offers two servicing features - Fixed Base and Tilt Base. Fixed Base designs must be maintained from the ground if it can be reached, or by a portable ladder. However, designs are light enough to be installed by hand without the use of a crane. Tilt Base designs are assembled along the ground and raised manually by hand. For maintenance, the design can be lowered, serviced, and raised back into position by hand.

STANDARD.

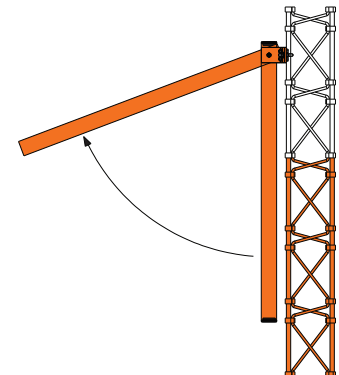
TOP MOUNT

102mm OD: *AMB-0000-0060*

OPTIONAL.

FOUNDATION KIT

9T: *AAF-09T0-0000*
 13T: *AAF-13T0-0000*



TILT STAND

7T/9T: *ATA-TT00-0007*